

What's New in SuperGIS Desktop 3.2

Jan 2014



-
- Brief Introduction of SuperGIS Desktop
 - New Features

Brief Introduction of SuperGIS Desktop

- The desktop GIS equipped with full GIS tools.
- Capability of displaying, editing, managing, query, processing and analyzing spatial data and relevant information.
- Capability of building proper GIS tools through customization and developing professional process environment.

Brief Introduction of SuperGIS Desktop

- Work with full Analyst Extension
 - Spatial Analyst
 - Network Analyst
 - 3D Analyst
 - Biodiversity Analyst
 - Spatial statistical Analyst
 - 67-97 Coordinates Transformation System (TW only)
 - CCTS Extension (TW only)

Brief Introduction of SuperGIS Desktop

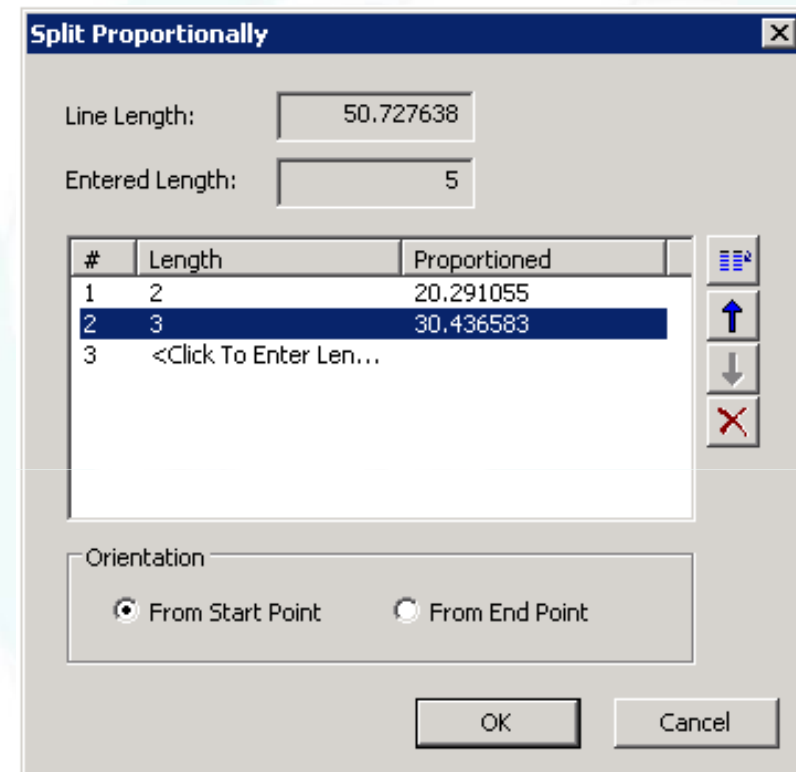
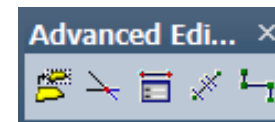
- Work with full Analyst Extension
 - Spatial Analyst
 - Network Analyst
 - 3D Analyst
 - Biodiversity Analyst
 - Spatial statistical Analyst
 - 67-97 Coordinates Transformation System (TW only)
 - CCTS Extension (TW only)

New Function Features

- Improved Editing Tools
- Enhanced Settings and User Interface
- Feature Guided Pages
- SuperGIS DataManager
- Georeferencing Tools
- OGC Service add-on
- Land Parcel Editor
- Cache Generator
- Online Map Tool

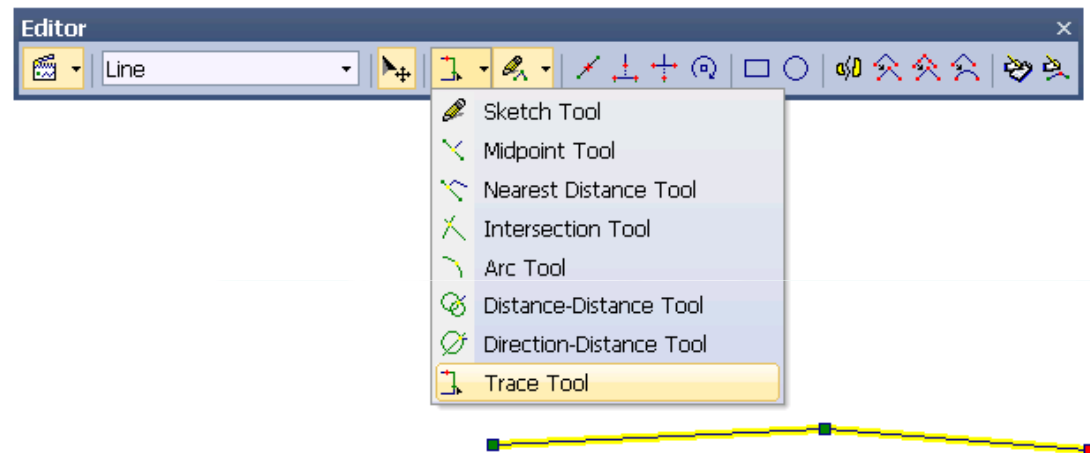
Improved Editing Tools

- **Advanced Editor Tool**
 - **Copy tool**
 - **Auto intersection**
 - **2-point line**
 - **Split proportionally**
 - **Point to line**



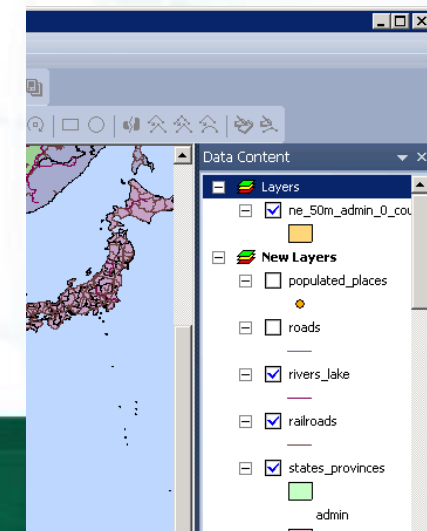
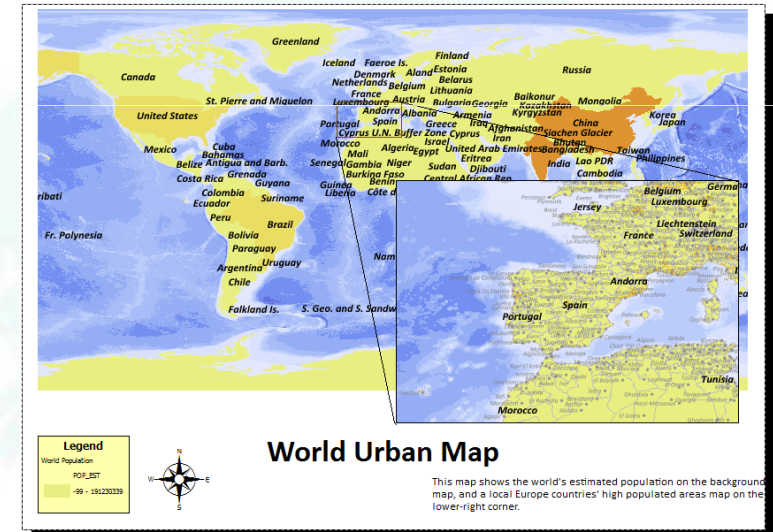
Improved Editing Tools

- Trace Tool
 - Can be applied to add new road feature along river feature, building feature, etc.



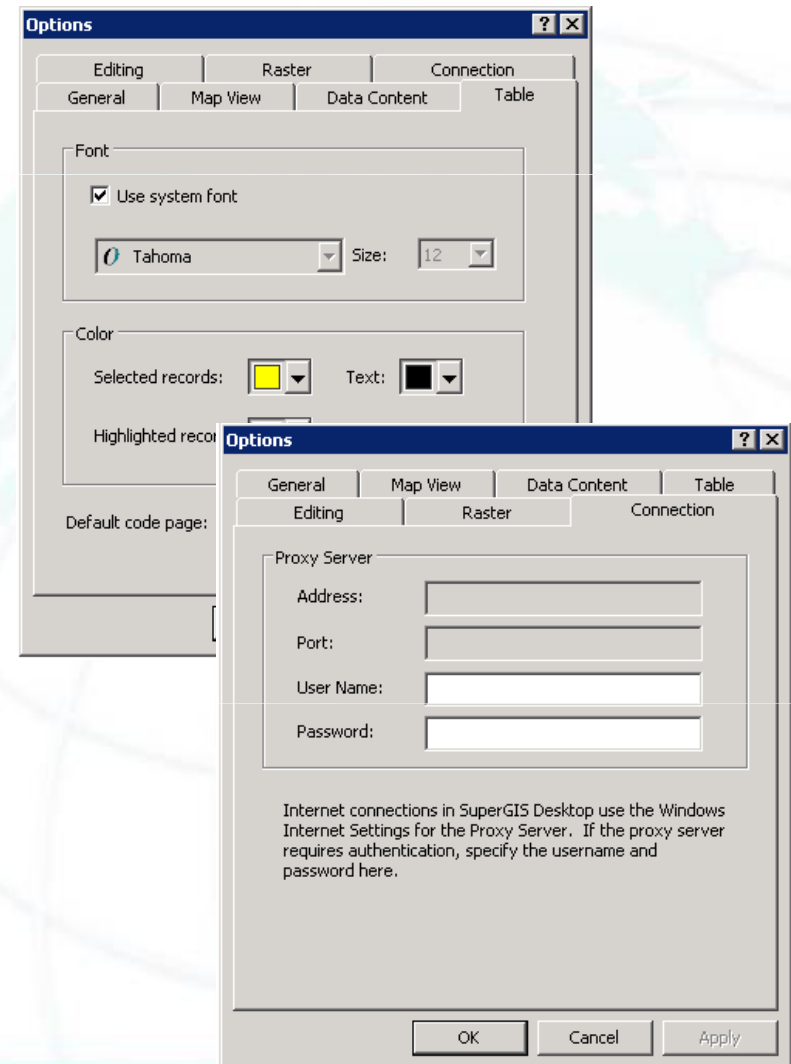
Enhanced Settings and User Interface

- Support to create multiple map frames
 - Support to view and export multiple maps with respective extents simultaneously
- Support to record relative path of the layer location in project
 - Locations of layers and projects can be moved with ease



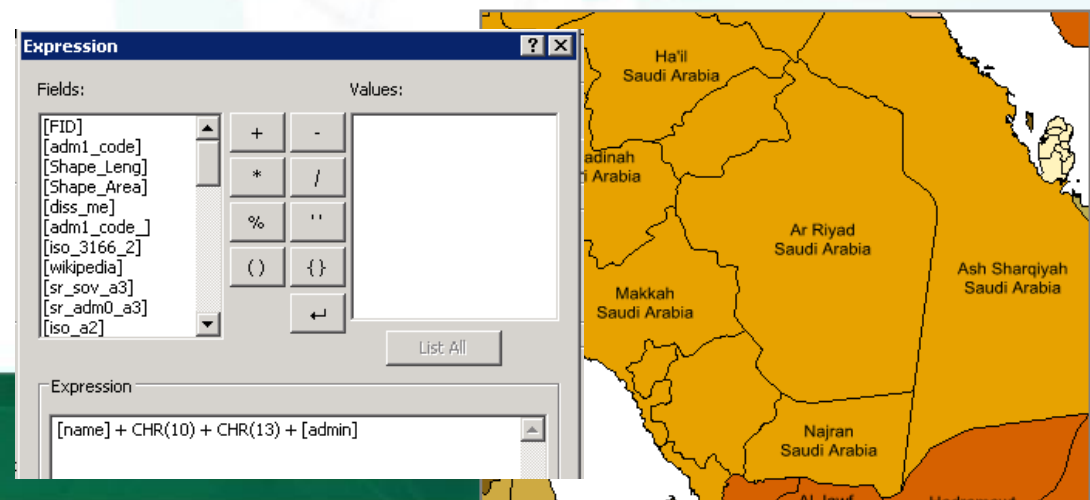
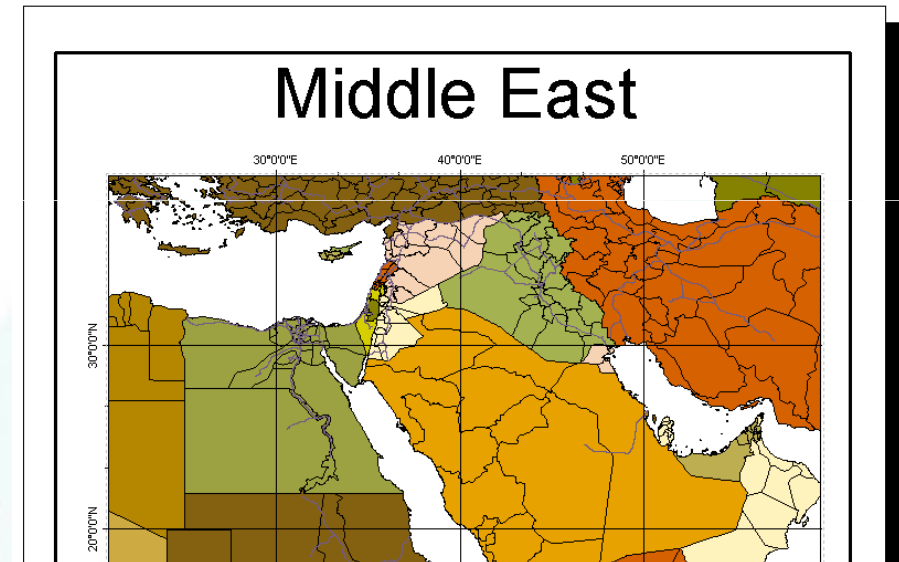
Enhanced Settings and User Interface

- Support to set the default code page
- Support to set Proxy Server
- Support ODBC (Open Database Connectivity)



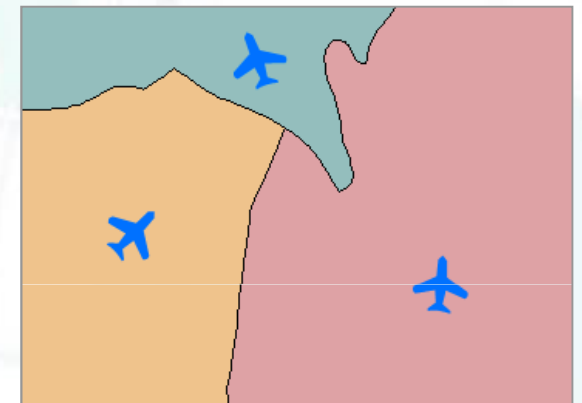
Enhanced Settings and User Interface

- Enhance Layout Grid settings and support to show Y Axis label vertically
- Support to show multiple line labels



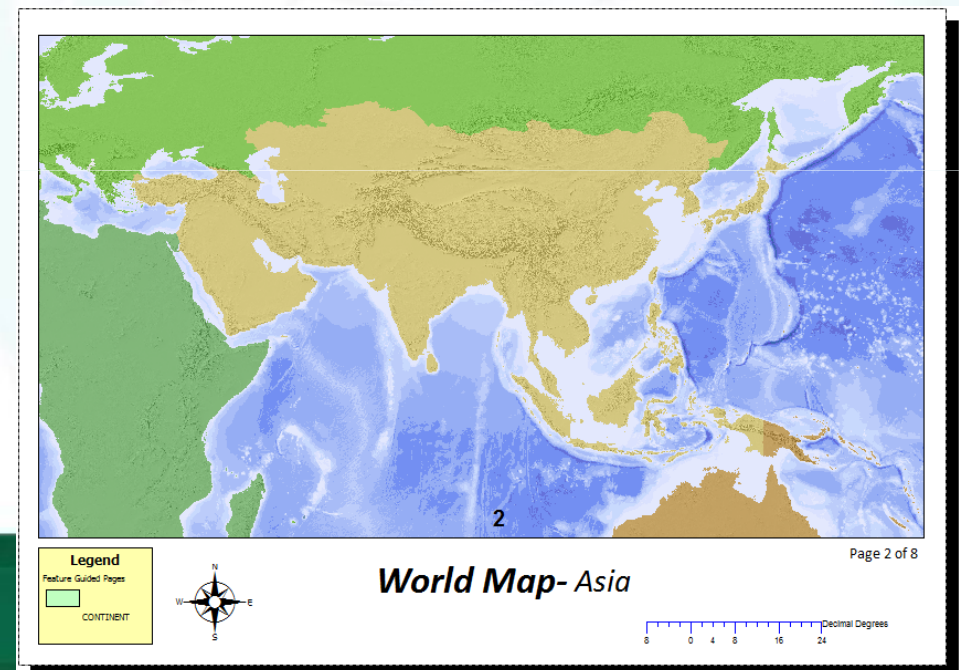
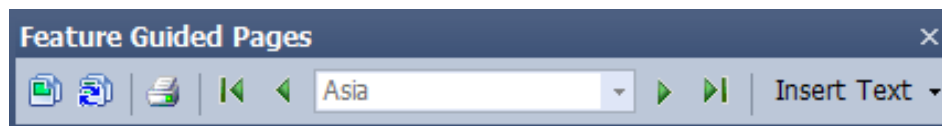
Enhanced Settings and User Interface

- Field Calculator Function
 - Support to get XY value of start point of a line feature, XY value of end point of a line feature, middle point of a line (midpoint of a distance), and the length of a line.
 - Support to get XY value of geometric center of a polygon feature.
- Point symbol can be rotated and resized based on attribute value.
- In Graduated Color and Graduated Symbol, Data Exclusion can be specified so that data in special range will be excluded in the category through expression



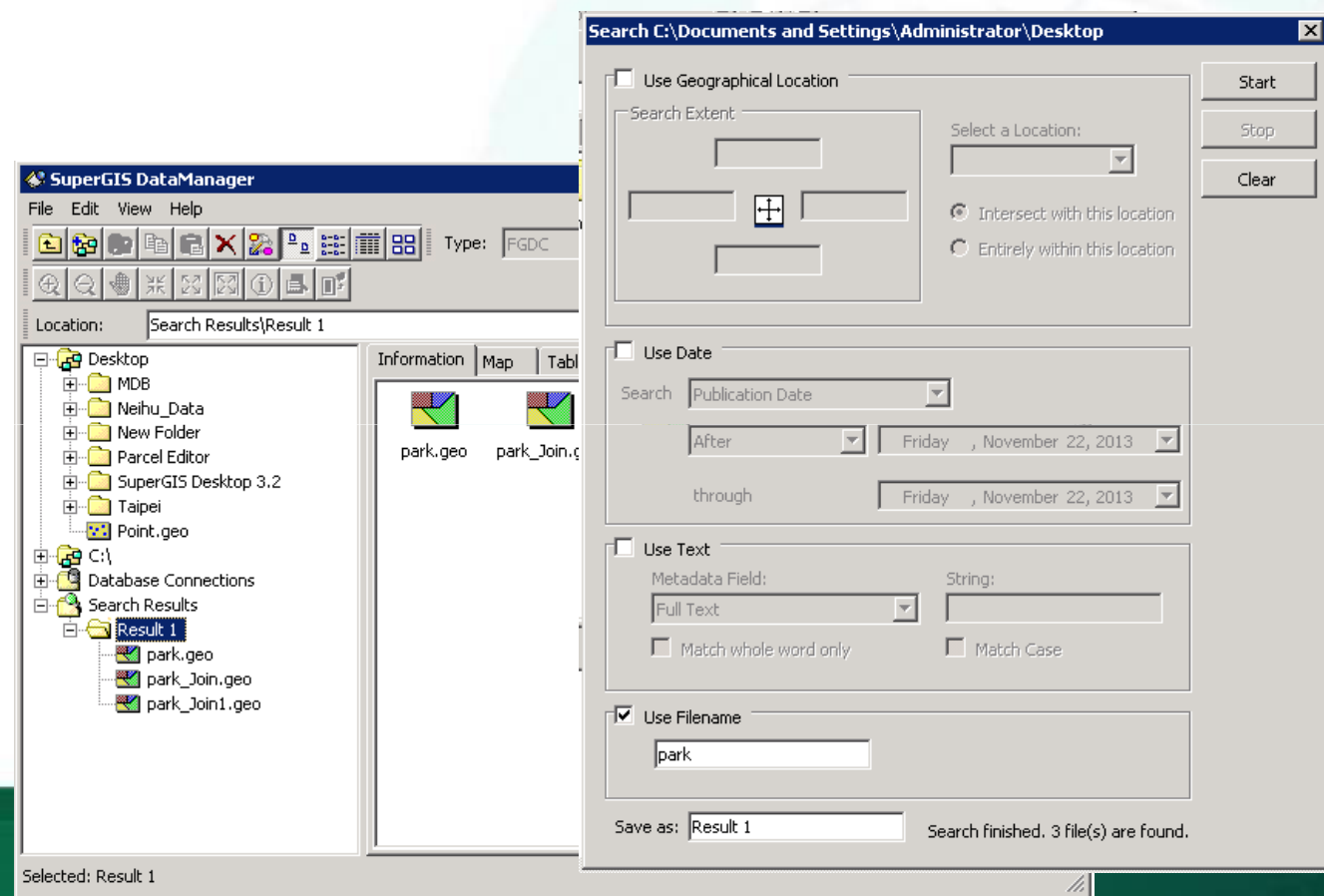
Feature Guided Pages

- Users are able to export map layout of a single map project file according to the specified layer. The tool views each feature as a single map page and is especially useful when publishing thematic maps.



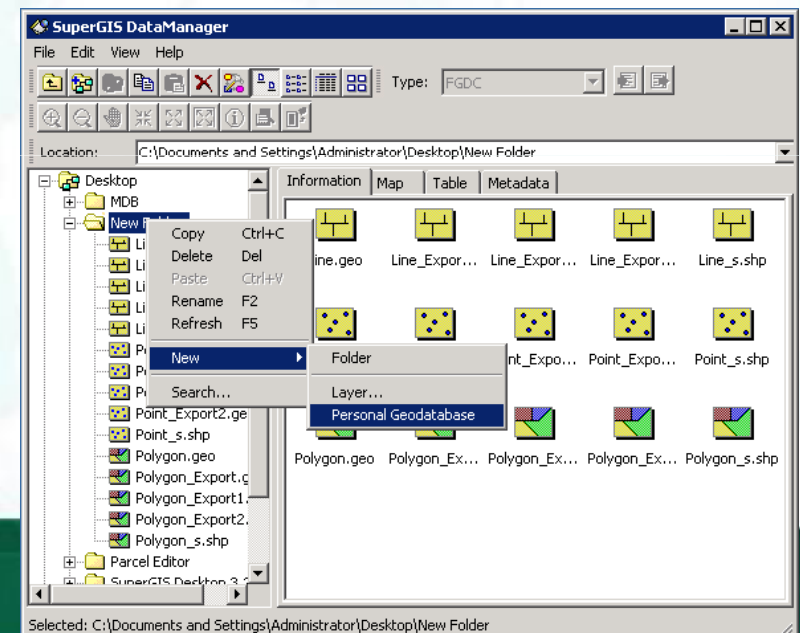
SuperGIS DataManager

- Support to import and export metadata.
- Support to search layer by file name.



SuperGIS DataManager

- Support to add layer file onto SuperGIS Desktop 3.2 by Drag & Drop method.
- Support to activate SuperGIS Toolkit.
- Support to build Personal Geodatabase (MDB).



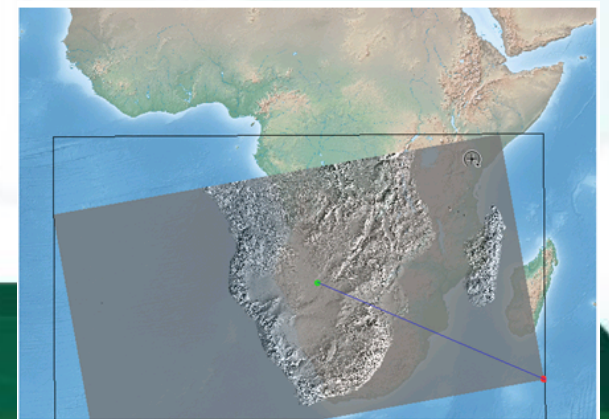
Georeferencing Tools

- Provide Transformation Tools, such as "rotate", "pan", "zoom in / out" or "geometric correction", so that users can modify position, size and orientation of image.
- "Flip Horizontal", "Flip Vertical", "Rotate Left" and "Rotate Right" functions are provided for users to adjust image faster.



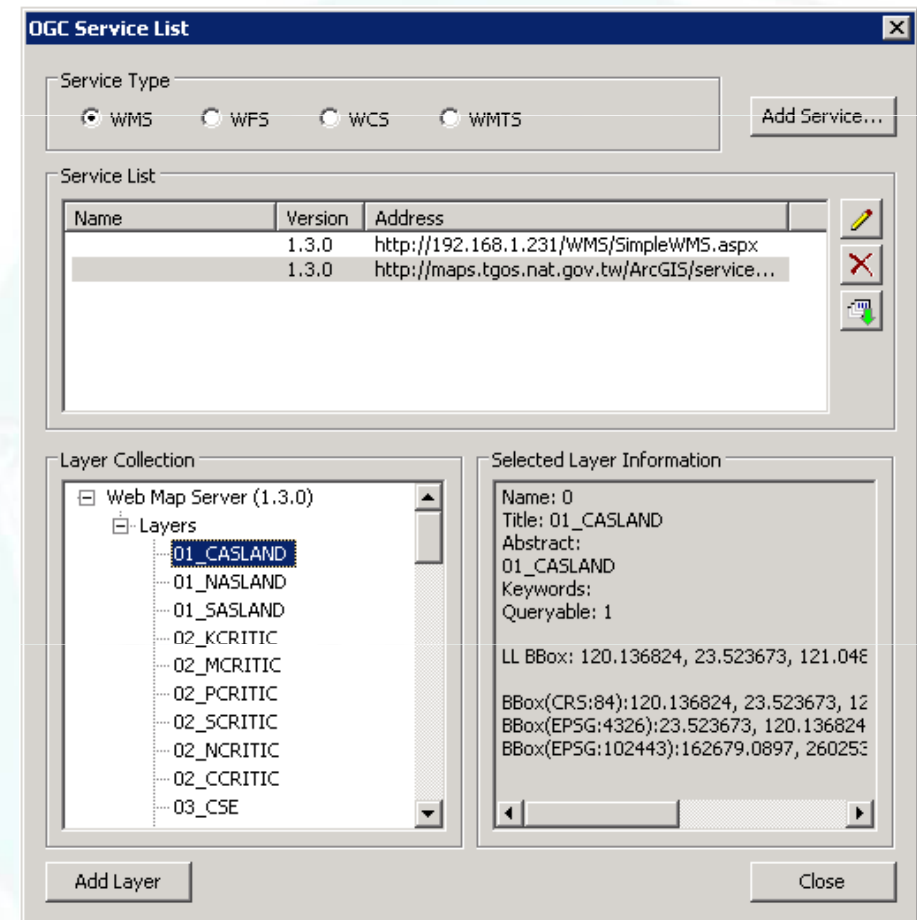
Georeferencing Tools

- Rectify images through newly added control point tools. Also, users can utilize control point tools to manage control points with ease.
- Provide three grades of polynomial algorithms to enhance the precision.



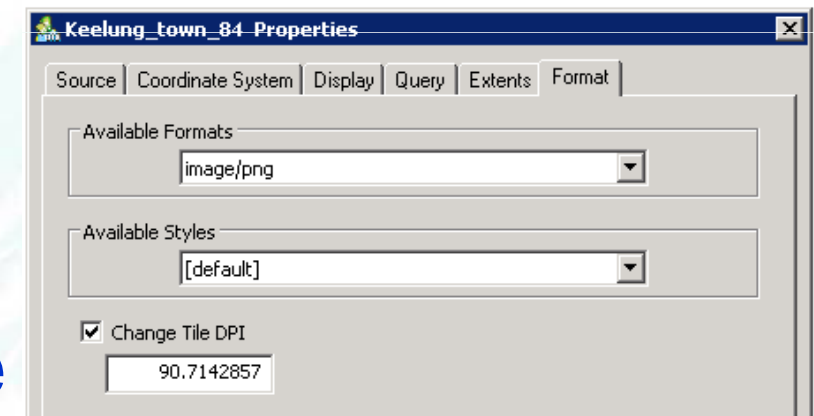
OGC Service add-on

- The interface integrates WMS, WFS, WCS and WMTS services.
- Enhance functions of querying WMS and WFS layer information.



OGC Service add-on

- Enhance property page of layers; in WMTS, the system supports DPI setting of custom map tile.

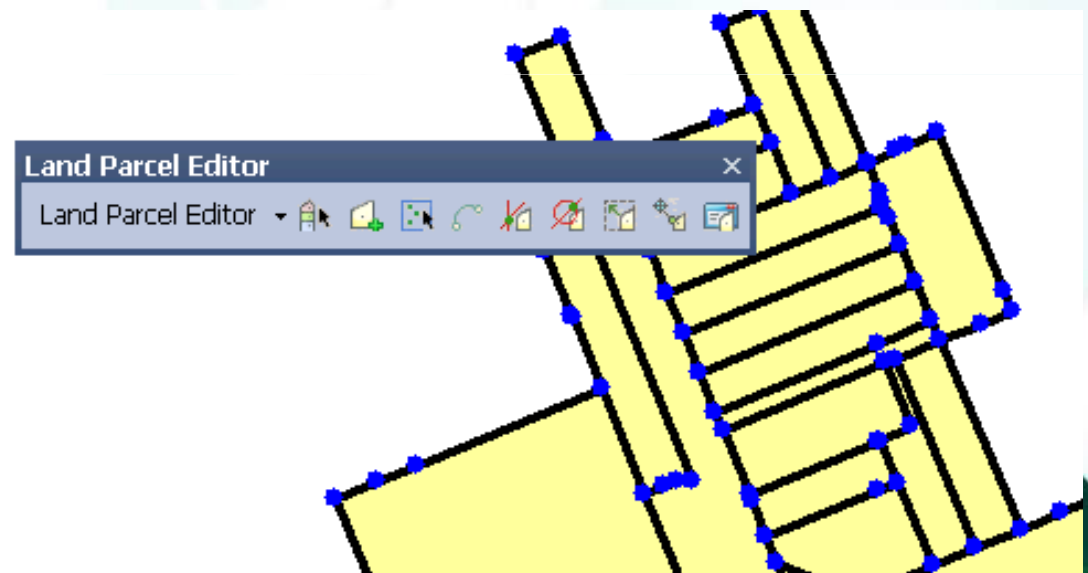


- Supported Version of Service Types include:

- **WMS** **1.0.0 / 1.1.0 / 1.1.1 / 1.3.0**
- **WFS** **1.0.0 / 1.1.0**
- **WCS** **1.0.0 / 1.1.0 / 1.1.1**
- **WMTS** **1.0.0**

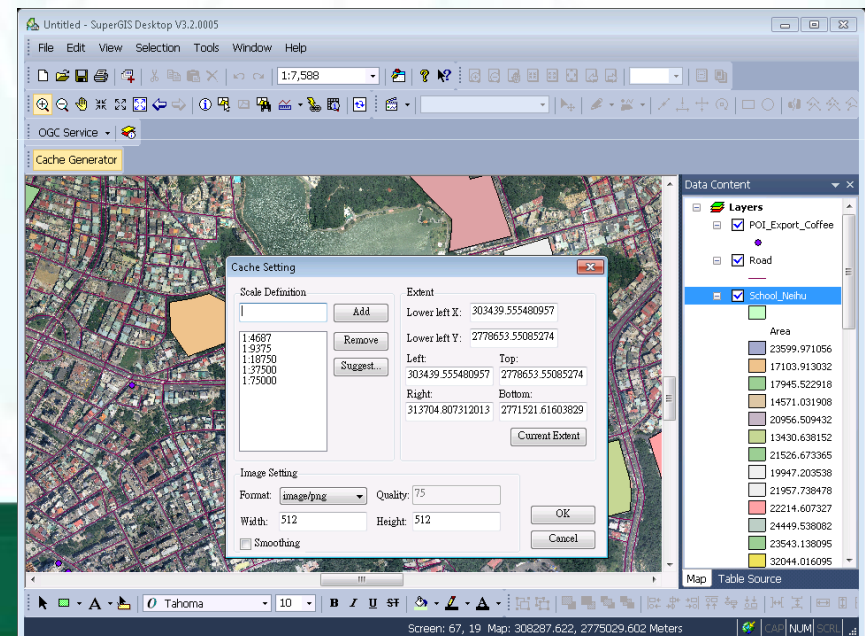
Land Parcel Editor

- Enable cadastral managing personnel, such as survey crew, to manage and edit cadastral data on SuperGIS Desktop 3.2. The tool used for cadastral feature is also provided to match characteristic of the feature.



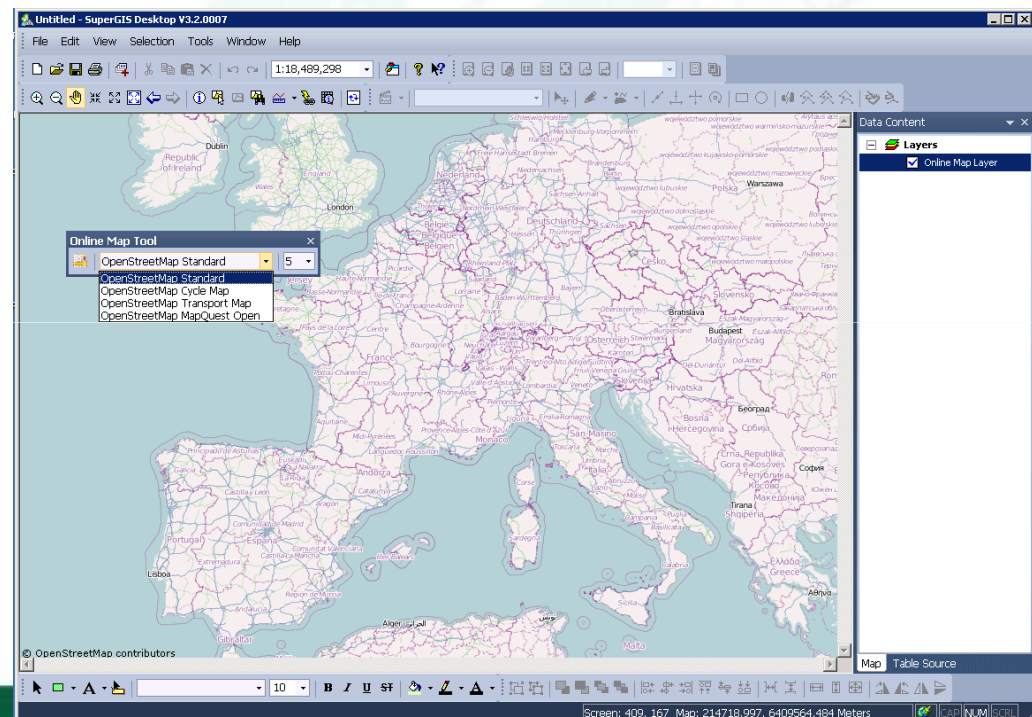
Cache Generator

- Cache Generator can create cached map in STC format and provide the generated cached map for usage on SuperGIS Server 3.1a or other SuperGIS applications.



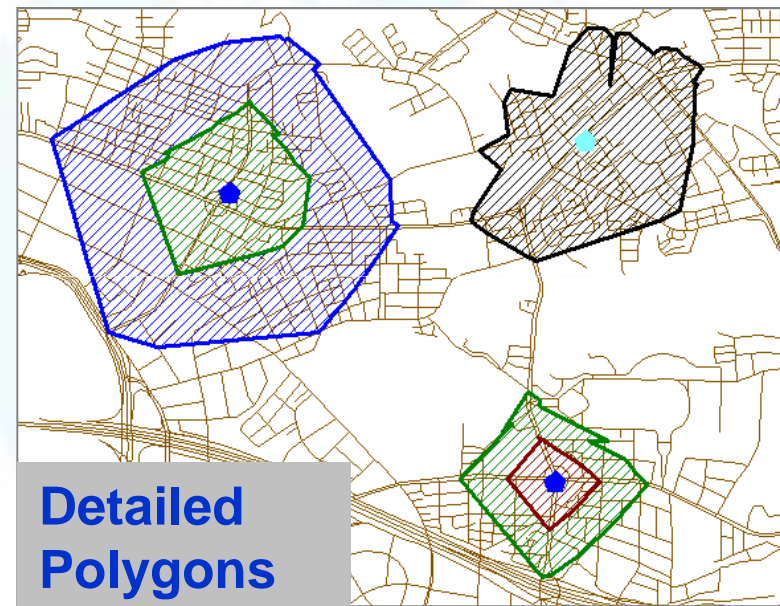
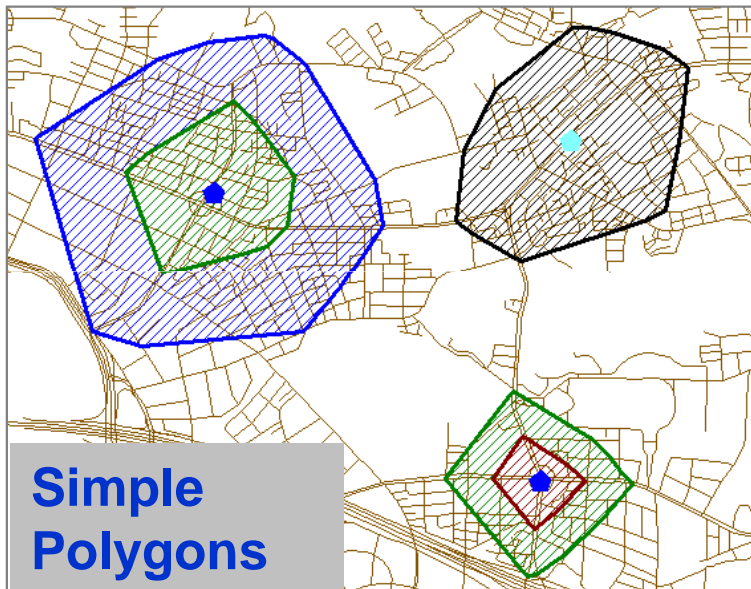
Online Map Tool

- Designed as built-in tools.
- Support to apply OpenStreetMap as the basemap



Analysts

- Network Analyst
 - Enhance user interface
 - Service area supports detailed polygons.



Analysts

- Biodiversity Analyst
 - **Enhance user interface and convenience**
 - ✓ Export raster file name
 - ✓ Modify interface text
 - ✓ The newly added export formats include Text Files and DBF files.

~Thank You~

